

asp

american  
society of  
photographers



Museum Project



The American Society of Photographers was officially founded August 1, 1937. ASP is a society of professional photographic artists who aspire to maintain the highest level of excellence by adhering to ethical standards, stimulating creativity and continually refining technical competence. The goal of the organization is to promote education, foster fellowship, and perpetuate the ideals of photography as a science and an art.

ASP boasts a membership of nearly 700 photographers. The images presented here are selected from entries submitted by many of ASP's top photographers and represent the wide variety of styles and subject matter our members produce.



# Goal of Exhibition

This exhibition offers a look into what exceptional contemporary photographers are creating and the methods and techniques they employ to achieve the final artwork. It is a thought-provoking body of work with teaching aspects for all levels including on the techniques and exceptional quality of professional photography. Through this exhibit, the viewer's relationship with and understanding of photography will be enhanced, both as an art and a science. This exhibit will act to lift the photographic industry as a whole.

# Artists

The American Society of Photographers is an international society of professional photographic artists. The Society's membership includes international speakers, image competition jurors, and art educators. Within the organization are many talented artists, a number of whom have been featured in galleries and museums worldwide. ASP hosted a call for entry among its members, from which these exhibitions were formed to highlight the best of our industry.

# Condition and Installation of Artwork

- All artwork will be delivered ready to hang (D-Rings and wired).
- Maximum framed/overall size of each piece will be no greater than 36x36"
- Materials on which images are printed will vary.
- All artwork is for wall installation.



# Educational Opportunities

ASP would provide a list of artists who will be available for the opening, panel discussions, lectures, or artist talks about the creative process of the artwork or other topics related to the exhibition, geared to all ages. Talks may also be created for audiences of different levels of experience with the subject matter.

Recordings of the artist speaking about their work is planned for the exhibition portable audio experience.

Each image may be accompanied by a story about the art piece. This may include how and when the vision and image were completed, camera settings and techniques used, as well as the vision and thought process of the artist. Each will be 200 words or less and can be shortened as needed.

# Promotional Materials

Promotional Materials will be provided in digital formats created by ASP or in conjunction with (museum name). 50-150 word artist biographies accompanied by head-shots will be provided in addition to information needed to label objects. ASP would like to produce a catalogue or artist booklet if budget permits. Any size of promotional materials, including postcards, leave behind and artists plaques can be designed and provided by ASP in a digital format so that it is easy for International Arts and Artists to add logos and texts for specific advertising.

# Label Information

Artist information, object details, and object text will be provided in requested format for printing by the museum, or will be provided printed if required by (museum).

# Proposal for the American Society of Photographers Juried Exhibition

## Titles of Exhibitions

*The Makers Muse: Contemporary Photographic Art by the Artists of the American Society of Photographers*

*Quiltwork of the Land*

*Form*

*Beauty of Nature*

*Images of Women*

*Vintage*

*Imagination and Technique*

*In Their Own World*

## Summary of Work

Exceptional photographic artwork created by current members of the American Society of Photographers, using varied creation, printing and presentation methods and working with multiple subject matters. In the digital era, "The Makers' Muse" emphasizes that impact goes beyond an immediate reaction to a fleeting digital image, and instead is deepened by a reflective process obtained through time spent viewing the printed image. Additionally, with time, consideration can be given to the techniques employed by each individual artist, who all start with the same tool and complete pieces through varying techniques.

## Goal of Exhibition

This exhibition offers a look into what exceptional contemporary photographers are creating and the methods and techniques employed to achieve the final artwork. It is a thought-provoking body of work with teaching aspects for all levels including on the techniques and exceptional quality of professional photography. Through this exhibit, the viewer's relationship with and understanding of photography will be enhanced, both as an art and a science. This exhibit will act to lift the photographic industry as a whole.

## Administrator

Leslie Ann Kitten, American Society of Photographers Museum Project Board Liaison, Photographic Artist, Lubbock, Texas  
Anne Looney, American Society of Photographers, Museum Project chair, Columbia, Maryland

## Number of Pieces in Exhibition

*Maker's Muse* - 29

*Quiltwork of the Land* - 27

*Form* - 19

*Beauty of Nature* - 16

*Images of Women* - 15

*Vintage* - 15

*Imagination and Technique* - 7

*In Their Own World* - 13

## Condition and Installation of Artwork

All artwork will be delivered ready to hang (D-Rings and wired)

Maximum framed/overall size of each piece will be no greater than 36x36"

Materials on which images are printed will vary.

All artwork is for wall installation

## Educational Opportunities

ASP would provide a list of artists who will be available for the opening, panel discussions, lectures, or artist talks about the creative process of the artwork or other topics related to the exhibition, geared to all ages. Talks may also be created for audiences of different levels of experience with the subject matter.

Recordings of the artist speaking about their work is planned for the exhibition portable audio experience.

Each image may be accompanied by a story about the art piece. This may include how and when the vision and image were completed, camera settings and techniques used, as well as the vision and thought process of the artist. Each will be 200 words or less and can be shortened as needed.

## Promotional Materials

Promotional Materials will be provided in digital formats created by ASP or in conjunction with (museum name). 50- word artist biographies accompanied by head shots will be provided in addition to information needed to label objects. ASP would like to produce a catalogue or artist booklet if budget permits. Any size of promotional materials, including postcards, leave behind and artists plaques can be designed and provided by ASP in a digital format so that it is easy for (museum name) to add logos and texts for specific advertising.

## Label Information

Artist information, object details, and object text will be provided in requested format for printing by the museum, or will be provided printed if required by (museum).

## Derivative Works

To be determined

## Contributions from Local Artists

ASP has multiple artists residing (location of museum or "across the country") who are included in the exhibition. Because of the geographic proximity to (location of museum), those who follow their work in your area, and those who follow local art, will attend this exhibit. Support is always greater for local artists.

Having a local artist in the exhibit can also bring other avenues of success and press coverage for the museum. These artists are always willing to give their time to teach and lecture. Incorporating them into the lecture series could bring new memberships and patrons looking for a different line of theory. Teaching techniques, from camera gear, to lighting and computer programs and even speaking on how they gain the capture, will bring a fresh perspective to the application. Local artists will also be able to attend a grand opening for the exhibit and garner a larger crowd.

## Contributions from National Artists

Just as local artists can help with attendance, national and international artists will help with the wide-spread press of the exhibit. ASP will be providing all contributing artists with press releases for print and social media, complete with a link for the museum. Because your link will be found on their numerous websites, the rankings of your internet presence will be heightened. Because our artists are deemed some of “the best of the best” artists, most have followers from all over the world.

American Society of Photographers is an established organization with a membership of invited artists only. These artists must also be a part of Professional Photographers of America, PPA. PPA members are worldwide, and most are familiar with ASP members as mentors or sources to expand their creativity. This will increase our reach for the exhibit by over 30,000 current members as well as their guests to the exhibit..

## Insurance

Each piece insured by the maker.

## Shipping

To be arranged

## Information for Consideration

Extended artist biographies and CV/resumes can be provided upon request.

## For more information, contact:

Leslie Kitten  
3212 Woodrow Road, Lubbock, TX 79423  
806-577-2201

# The Maker's Muse

In the digital era, "The Maker's Muse" emphasizes that impact goes beyond an immediate reaction to a fleeting image, and, instead is deepened by a reflective process obtained through time spent viewing the printed image. Additionally, with time, consideration can be given to the techniques employed by each individual artist, who all start with the same tool and complete pieces through varying techniques.

Offering up the seed from which so much is grown, the touch of inspiration that spurs thought into action, she is the maker's muse. In this collection from the American Society of Photographers, photographic artists from all over the United States and beyond let their muses out to frolic. Whether it is a strike of lightning from a looming thunderhead, an alien birth or small birds resting in a tea cup, the elusive muse bestows her gifts differently on each artist and revels in the resulting eclectic mix as displayed in this far reaching collection.



"With Head  
Bowed Low"

Terry Whittaker

Presentation  
dimensions:  
20W X 17.8H X 1.5D





"Antartic Armada" John Herrel Presentation dimensions: 36W X 12.75 X 1D



"Elegant Lily"  
 Paul Biederman  
 Presentation dimensions:  
 20.5W X 24.5 X 1.5D

"A Pause in the Dance"  
 Doc List  
 Presentation dimensions:  
 pending



"Metamorphosis"  
 Phaneendra Gudapati  
 Presentation dimensions:  
 25.33W X 32H X 1D

"Oceanides"  
 Thom Rouse  
 Presentation dimensions:  
 30W X30H X 1D



"The Scar"

Tim Kelly

Presentation  
dimensions:  
25W X 25H X 2.5D







"Weeping Beauty"  
Gina Gardener  
Presentation dimensions:  
30W X 25H X 1D



"Thunderbolt"  
Joe Glyda  
Presentation dimensions:  
36.5 X 30.5 X .75D



"Sunny"  
Leslie Hoyt  
Presentation dimensions:  
26W X 26H X 1D



"When Flowers Have Faces,  
They Dance"  
Karen Nakamura  
Presentation dimensions:  
14W X 20H X 1D



"Drama Queen"  
Valarie Clayton  
Presentation dimensions:  
13.25W X 19H X 2D



Ed Pedi  
"Butterfly Kisses"  
Presentation dimensions:  
26W X 18H X 2D



"Breakfast in Bed"  
Kimberly Smith  
Presentation dimensions:  
21.25W X 25.25H X 1.75D

"Early Morning Stretch"  
Sean Simmons  
Presentation dimensions:  
24W X 16H X 2D



"Dahlia Monster"  
Mel Carll  
Presentation dimensions:  
24W X 30.5H X 1D

"Delicate Waves"  
Anthony Marill  
Presentation dimensions:  
26W X 13.5H X 1D







"Row Boats" Mari Latozas Presentation dimensions: 32.25W X 23.75H X 1D





"Buonasera Serenissima"

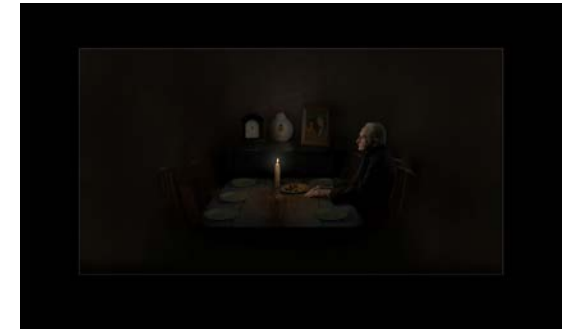
Georgia Zumwalt

Presentation dimensions:  
pending

"Numbered Days"

Aly Elliott

Presentation dimensions:  
36W X 24H X 2D



"Forsaken"

Nancy Basmann

Presentation dimensions:  
32.2W X 31.63 X 1.2D



"Standing Guard"

Bruce Bonnett

Presentation dimensions:  
22W X 36H X 1D

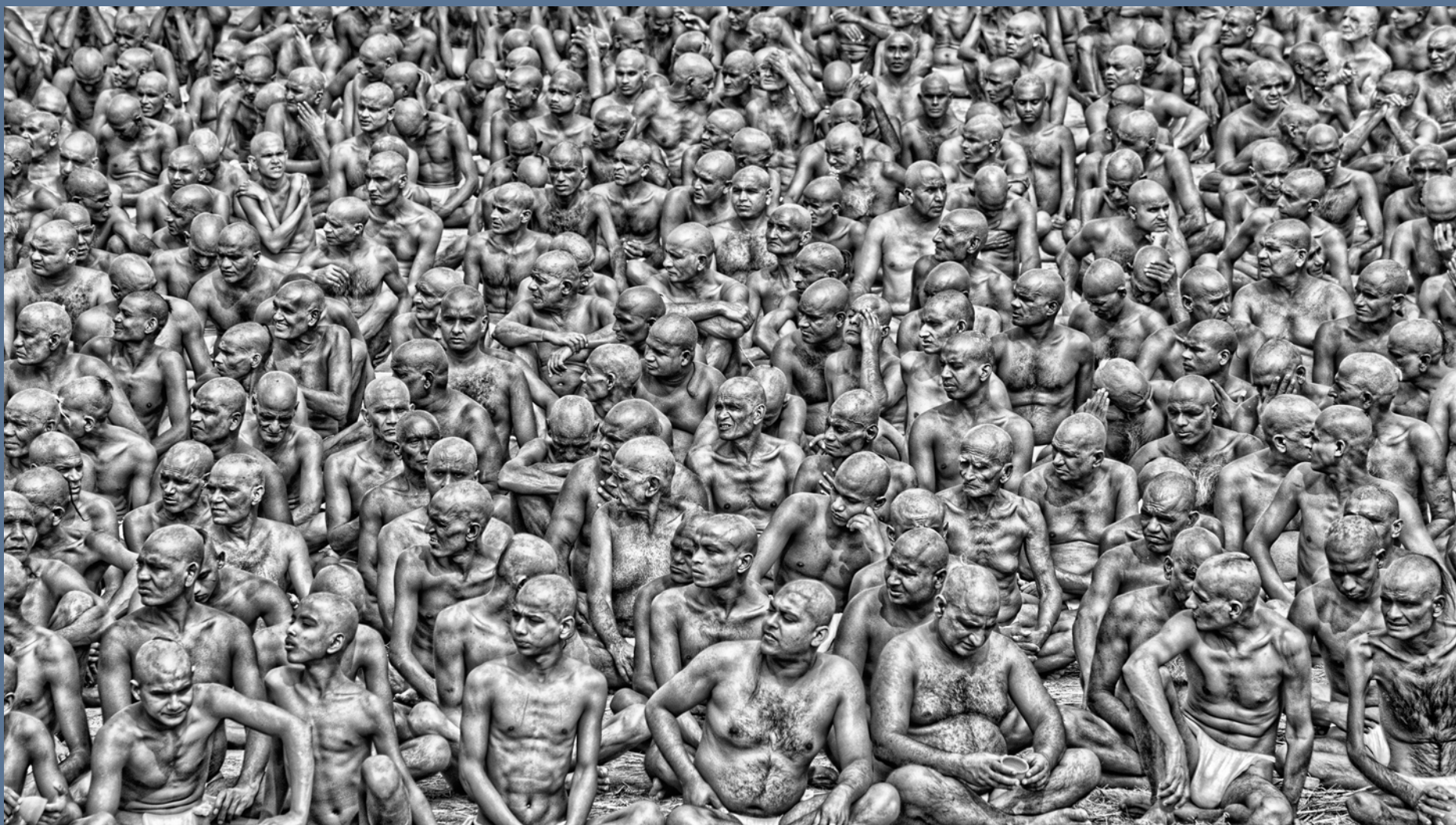


"The Watchman"

Frances Aileen Harding

Presentation dimensions:  
24W X 18H X 1D





"The Brotherhood" Gail Nogle Presentation dimensions: 36W X 24.5H X 2D





"The Thinker" Shawna Hinkel Presentation dimensions 30.5W X 16.5H X 2D

"Just Around the Riverbend"

Kari Douma

Presentation dimensions:

18W X 22H X 1D



"Castle in the Sky"

Prem Mukherjee

Presentation dimensions:

36W X 24H X 1.5D



"Alien Incubation"

Ella Putney Carlson

Presentation dimensions:

21.25 X 25.25H X 2D

"Suspicious"

Sara Goodnick

Presentation dimensions:

26.5W X 20.5H X 1.5D





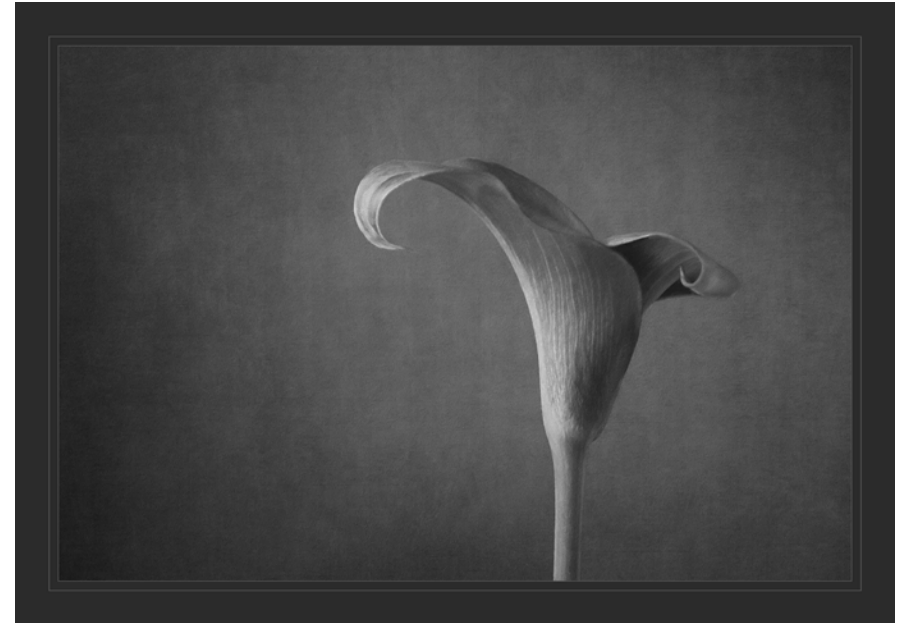
"The Final Bow" Valarie Clayton Presentation dimensions: 24.5W X 18.5H X 1D



# Form

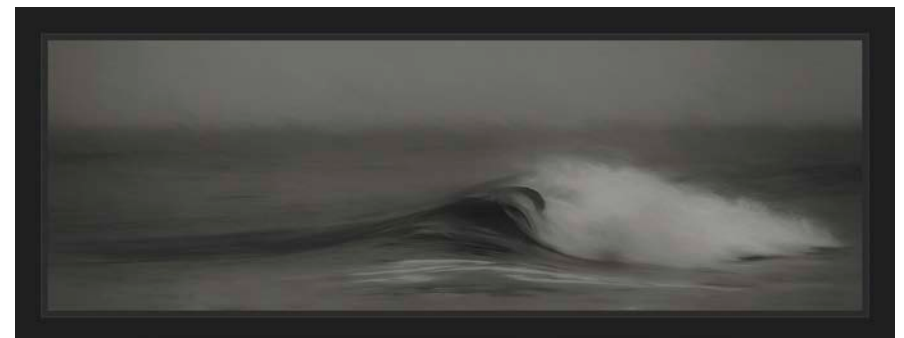
From the profile of a floating iceberg to the lines that comprise the human body, form speaks in a language so eloquent and expressive that one can rarely resist leaning forward for further examination. In this wide ranging collection, presented by the American Society of Photographers, the work of twenty different photographic artists expresses simplicity as well as complexity, and revels in repetition as well as distortion in form to convey power, grace and even humor.

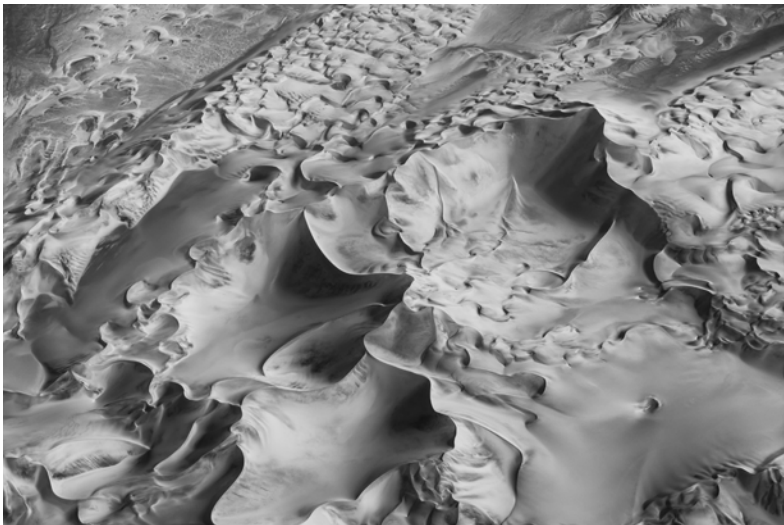
"Understated Elegance"  
Teri Whittaker  
Presentation dimensions:  
20W X 14.12H X 1.5D



"The Finale"  
Ed Pedi  
Presentation dimensions:  
pending

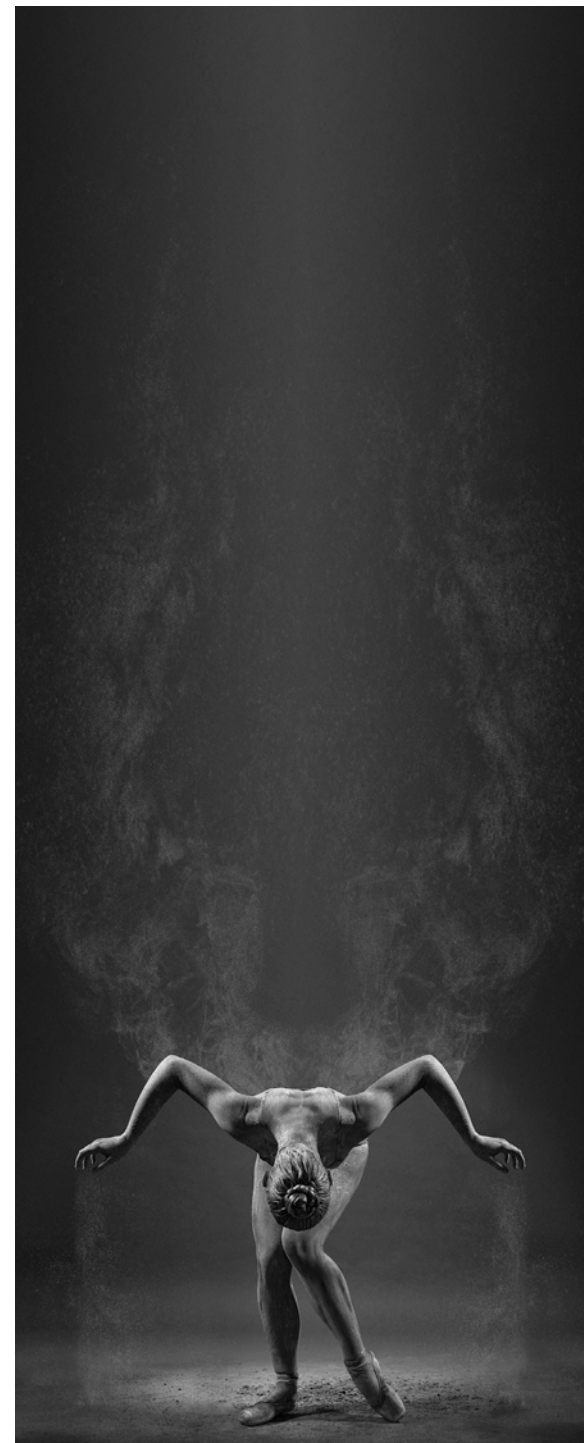
"The Last Wave of Winter"  
Jen Hargrove  
Presentation dimensions:  
30W X 16H X 1.13D





"Moon Walk"  
Shawna Hinkel  
Framed dimensions:  
31.5W X 21.5H X 2D

"From the Ashes"  
Dawn Muncy  
Presentation dimensions:  
pending



"Scaffolds Shadow"  
Anthony Marill  
Presentation dimensions:  
pending

"Angled"

Phaneendra  
Gudapati

Presentation  
dimensions:  
27W X 27H X 1.5D



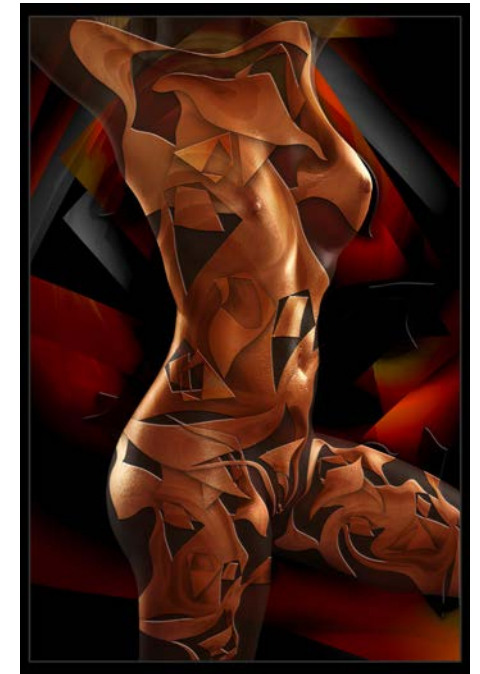


"Fruit of Life"

Deborah Billingsley

Presentation dimensions:

29.5 X 23.5 X 1.63D

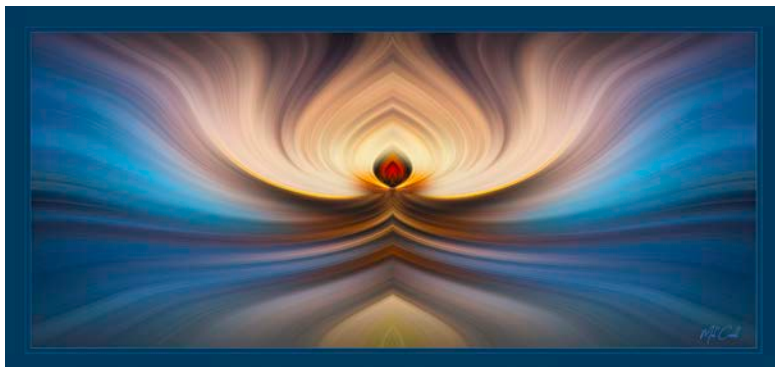


"Kandinsky Tattoo"

Thom Rouse

Presentation dimensions:

20W X 30H X 1D



"Look into my Eyes"

Mel Carll

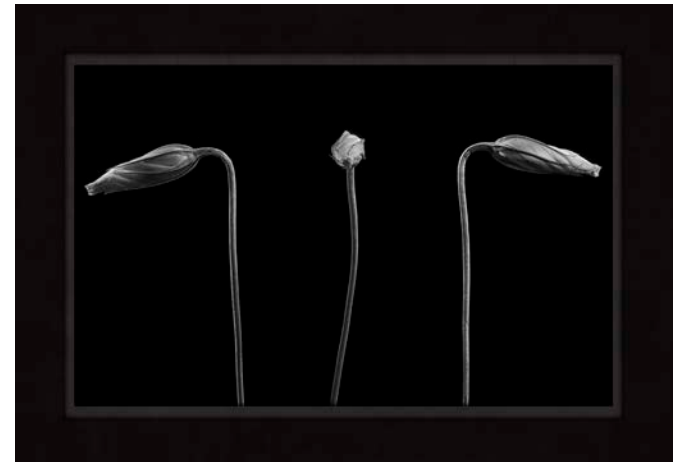
Presentation dimensions:

30W X14H X 1D



"Swallow the Silence"  
 Florina Romoser  
 Presentation dimensions:  
 pending

"Mug Shot"  
 Leslie Ann Kitten  
 Presentation dimensions:  
 pending

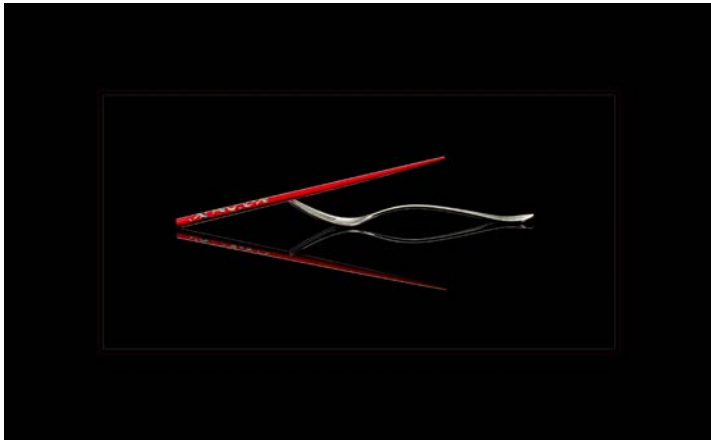


"Cream"  
 Leslie Hoyt  
 Presentation dimensions:  
 26W X 26H X 1D





"The Goddess Athena" Kristi Sutton Elias Presentation dimensions: pending

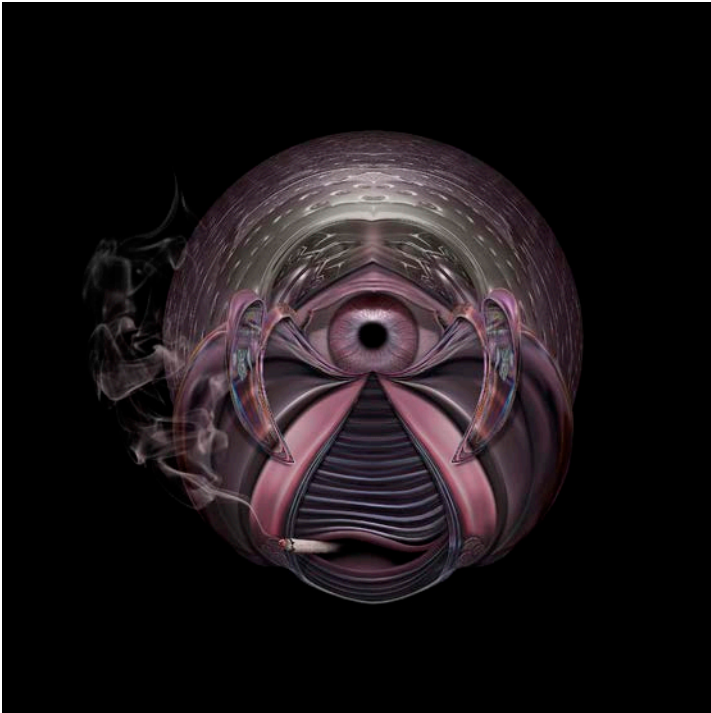


"East Meets West"

Sara Goodnick

Presentation dimensions:

26 1/2W X 20 1/2H X .75D



"Here's Lookin' at You, Kid"

Ella Putney Carlson

Presentation dimensions:

21.25W X 21.25H X 2D



"Stairwell of Indecision"

Georgia Zumwalt

Presentation dimensions:





"Thirsty at the River" John Herrel Presentation Dimensions: 36W X 12.75xH X 1D

# Images of Women

This exhibition, organized by The American Society of Photographers, features the work of eleven different artists and explores various aspects of the life of women, including dreams of connection and escape; fragmentation and reunification; elevation and objectification; embellishment and the lack of adornment. Using diverse styles, these contemporary artists bring the many facets of what it means to exist as a woman to life. Even though the lives of women vary tremendously from culture to culture, these themes persist throughout time and across social constructs. They are exquisitely depicted in this collection of works.



"Age and  
Judgment"

Florina Romoser

Presentation  
dimensions:  
pending





"The Lady in Red"

Doc List

Presentation dimensions:  
pending

"Aqua Maiden"  
Georgia Zumwalt  
Presentation dimensions:  
pending



"Symbol Tree"

Thom Rouse

Presentation dimensions:  
30W X 30H X 1D





"Time After Time"

Thom Rouse

Presentation dimensions:  
30W X 30H X 1D

"No One to Play with Me"  
Dawn Muncy  
Presentation dimensions:  
pending







"Unseen"  
Phaneendra Gudapati  
Presentation dimensions:  
pending



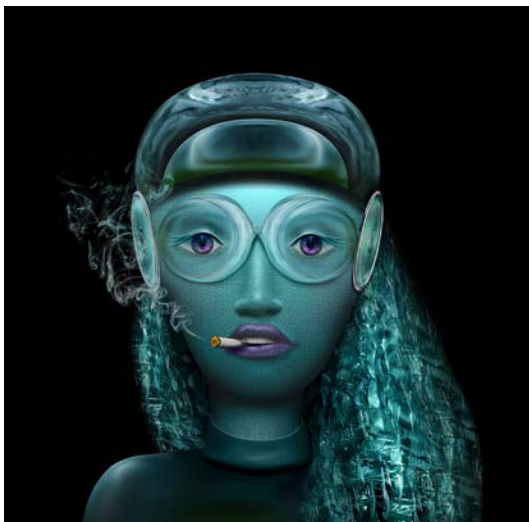
"Leap of Faith"  
Thom Rouse  
Presentation dimensions:  
23W X 33H X 1D



"Leaving with Dignity"  
Kimberly Smith  
Presentation dimensions:  
pending



"Descending Venus"  
 Kristi Sutton Elias  
 Presentation dimensions:  
 pending  
 :



"Aquatica"  
 Ella Putney Carlson  
 Presentation dimensions  
 21.25W X 21.25H:X 2D



"Hidden"  
 Bob Coates  
 Presentation dimensions:  
 27.5W X 36H X 1D



"From Dust We Came" Dawn Muncy Presentation dimensions: pending



"Art Deco Spires"

Leslie Hoyt

Presentation  
dimensions:  
pending





# Vintage

There is an irresistible human impulse to revisit the past and in this collection from the American Society of Photographers, contemporary photographic artists from every corner of the United States and beyond come together with images that evoke thoughts of days gone by. From horse-drawn carriages in a city square to vintage airplanes, this collection embraces visual anachronism captured through the modern lens and finds it worthy of exploration.



**VOUGHT F4U CORSAIR**  
FIRST FLIGHT MAY 29, 1940

"F4U Corsair"  
Joe Glyda  
Presentation dimensions:  
pending



**RAF SPITFIRE**  
FIRST FLIGHT MARCH 5, 1936

"RAF Spitfire"  
Joe Glyda  
Presentation dimensions:  
pending



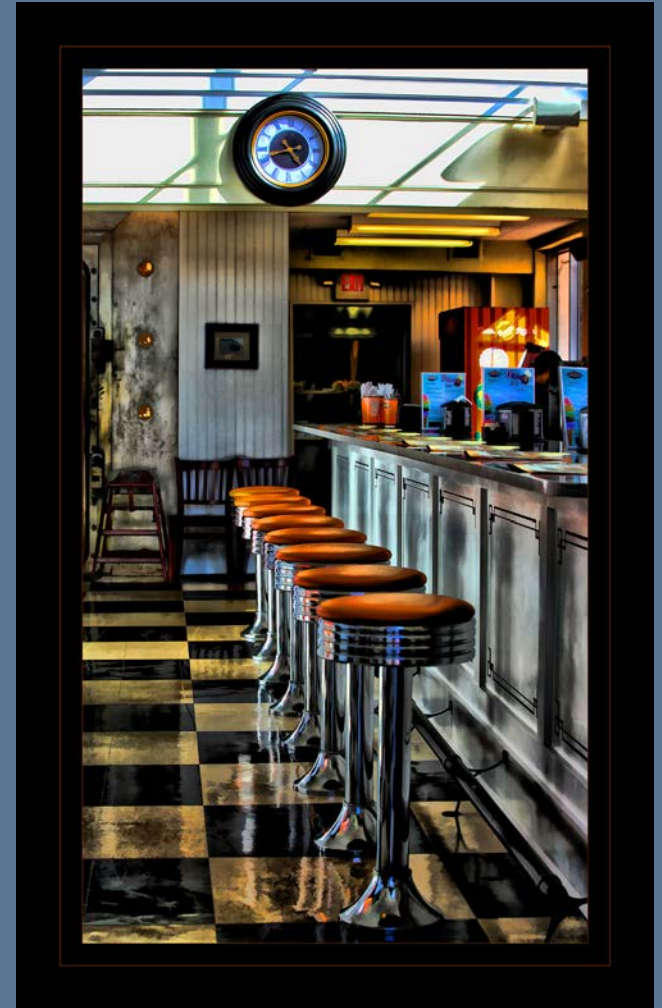
**NORTH AMERICAN T-6 TEXAN**  
FIRST FLIGHT APRIL 1, 1935

"T6 Texan"  
Joe Glyda  
Presentation dimensions:  
pending

"The Diner"

Jill Bochicchio

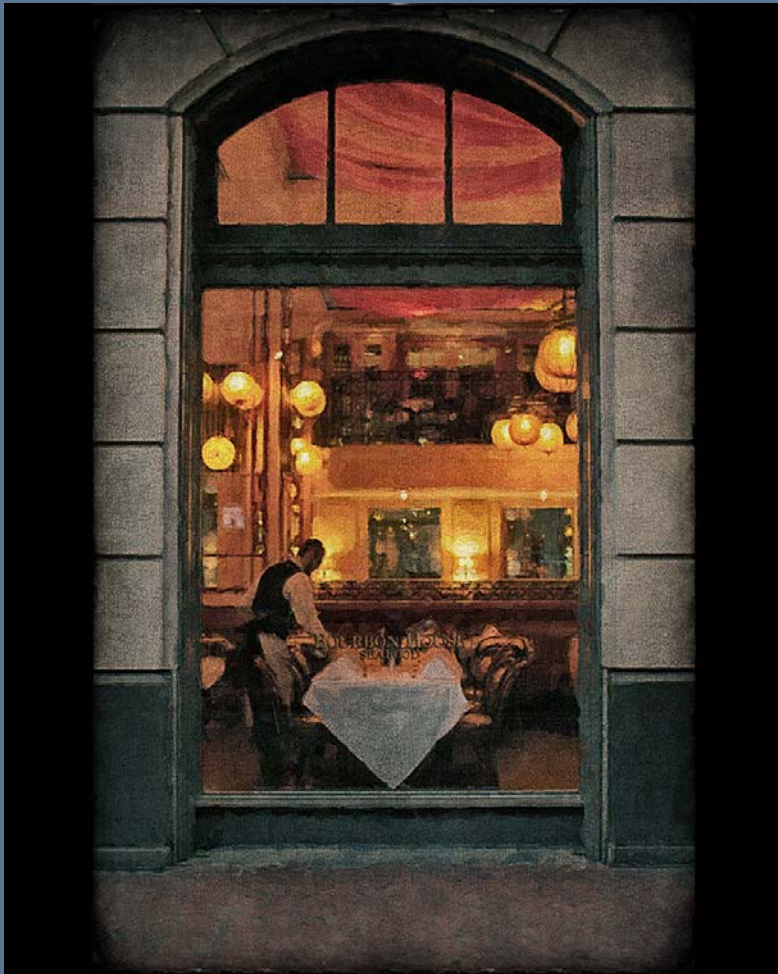
Presentation  
dimensions:  
pending



"The Setting"

Anthony Marill

Presentation  
dimensions:  
pending



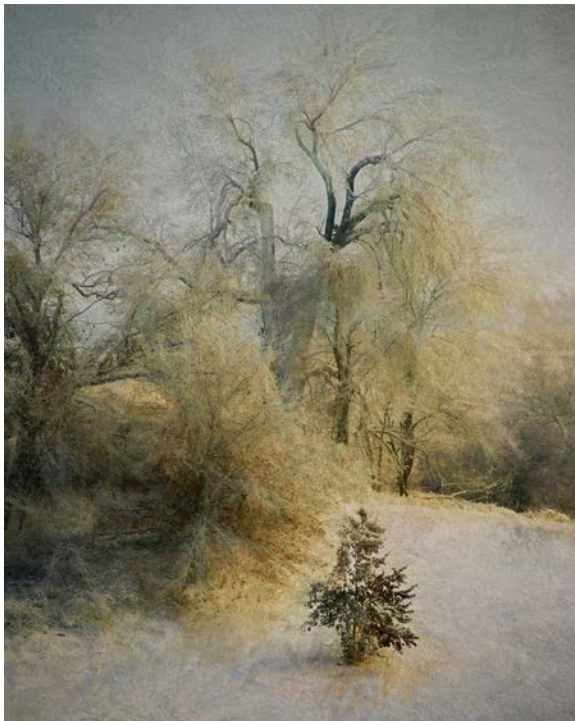


"The Shipyard" Gail Nogle Presentation dimensions: 36W X 20H X 2D





"December's Wintry Breath"  
 Valarie Clayton  
 Presentation dimensions:  
 35.5W X 27.5H X 2D



"Blissful Winter"  
 Howard Hinton  
 Presentation dimensions:  
 27W X 33H X 1D



"The Musician"  
 Gail Nogle  
 Presentation dimensions  
 26.75W X 36H X 2D:



"Ready"

Inna Sumra

Presentation Dimensions:

Pending





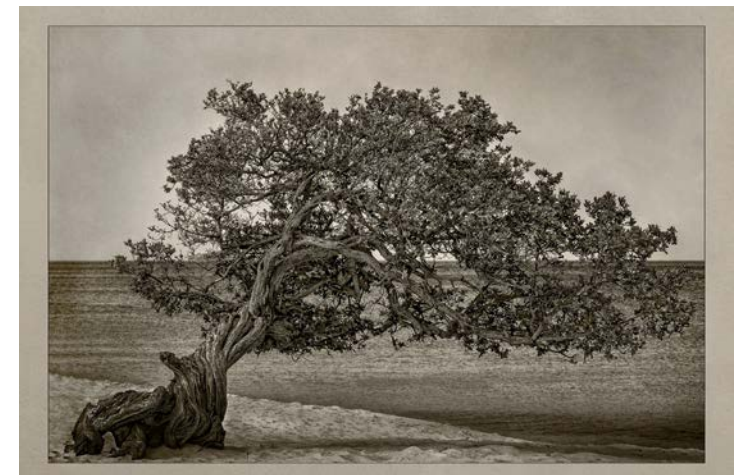
"Walk Though Matera"  
 Mari Latozas  
 Presentation dimensions:  
 24.75W X 32.75H X 1D



"Baltimore"  
 Anthony Marill  
 Presentation dimensions:  
 pending



"The Music Lesson"  
 Gail Nogle  
 Presentation dimensions  
 30.75W X 36H X 2D  
 :



"Majestic"  
 Howard Hinton  
 Presentation dimensions:  
 33.4W X 23.4H X .75D

# The Quiltwork of the Land

How most of us see the world around us is often a matter of perspective, but the way in which an artist depicts their surroundings is a matter of interpretation. In this collection from the American Society of Photographers, photographic artists focus on the elements of their environments and use a range of styles to portray the grandeur of a city scape, the tenderness of a bird feeding her chicks, the starkness of the desert scene, the fragility of relationships, or the wonder of flight.





"Bridging Metropolis" Rob Behm Presentation dimensions: 21.13W X 17.13 X 1.5D





"Preening at Dawn" Paul Biederman Presentation dimensions: 24W X 24H X 1.5D



"Taking Flight"

Bob Coates

Presentation dimensions:  
36W X 11.6H X 1D



"Alaskan Rush Hour"

Erica Lane Harvey

Presentation dimensions:  
36W X 12H X .5D





"The Homestead"

Kari Douma

Presentation dimensions:

22W X 18H X 1D



"Winter Sandscape"

Aileen Harding

Presentation dimensions:

24W X 12H X 1D



"Storm at Battery Point"

Bruce Bonnett

Presentation dimensions:

36W X 21.5H X 1D

"Family Dinner"

Frances Aileen Harding

Presentation dimensions:  
22W X 24H X 1D







"Windblown" Rod Brown Presentation dimensions: pending



"The Majestic Sierras" Bruce Bonnett Presentation dimensions: 36W X 12H X1D





"Storm on the Prairie"

Bruce Bonnett

Presentation dimensions:

36W X 17H X 1D



"Petal Skirt"

Leslie Hoyt

Presentation dimensions:

23W X 30H X 1D



"Shrouded in Silence"

Erica Lane Harvey

Presentation dimensions:

30W X 13.5H X 1D



"The Painted Perch"  
Sean Simmons  
Presentation dimensions:  
pending



"Mating Ritual"  
Paul Biederman  
Presentation dimensions:  
22W X24H X1.5D



"On Target"  
Bruce Bonnett  
Presentation dimensions:  
30W X 36H X 1D



"Intense" Paul Biederman Presentation dimensions: 24W X 24H X 1.5D



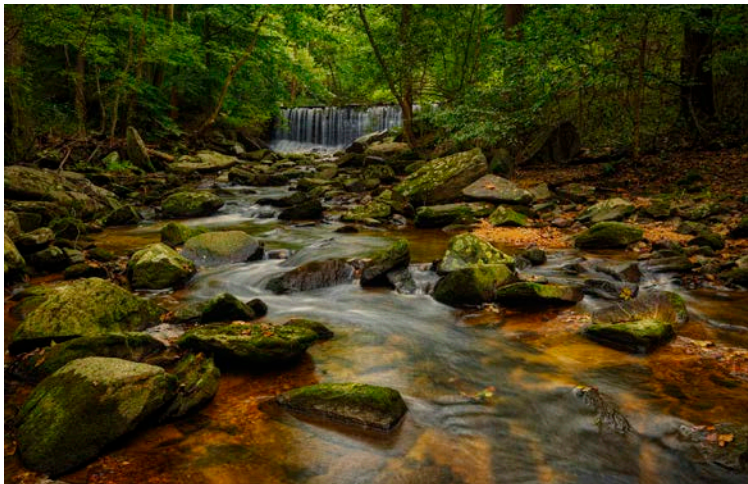


"Moody Blue" John Herrel Presentation dimensions: 36W X 18.13 X 1D



"River of Lightning"  
Prem Mukherjee  
Presentation dimensions:  
pending

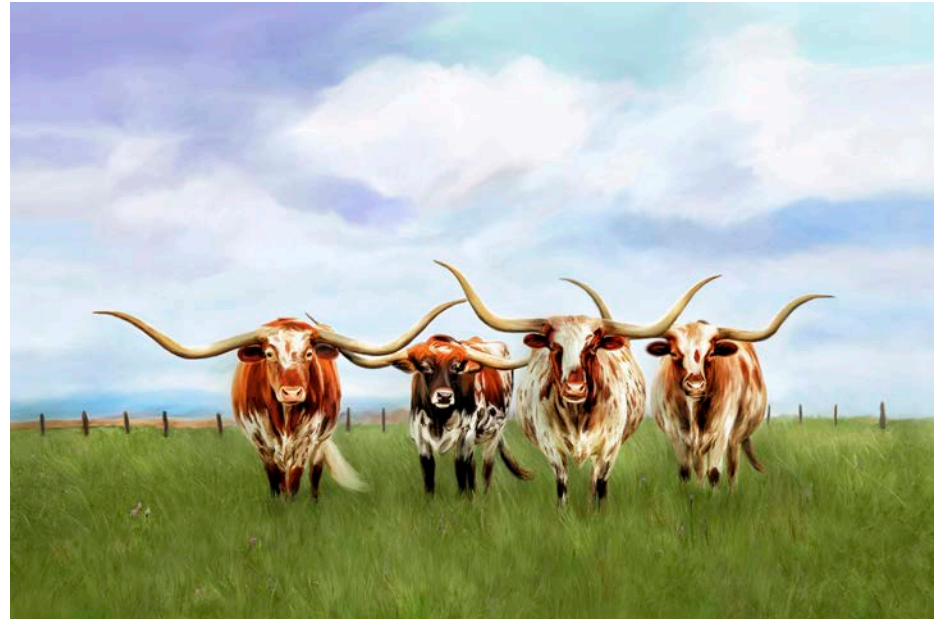
"Super Moon Rising"  
Erica Lane Harvey  
Presentation dimensions:  
30W X 20H X .5D



"Once Upon a Stream"  
Sean Simmons  
Presentation dimensions:  
pending



"Steer CLear"  
Valarie Clayton  
Presentation dimensions:  
31W X 24H X 1.5D



"Back Road to Siena"  
Maryanne Keeling  
Presentation dimensions:  
36W X 18H X3D





"Sea Stories" Rene C. Gage Presentation dimensions: 24W X 18H X 1.5D





"River City" Prem Muhkerjee Presentation dimensions: pending

"Sacred Temple"  
Yedi Koeshendi  
Presentation dimensions:  
pending



"Lake of Dreams"  
Prem Mukherjee  
Presentation dimensions:  
pending



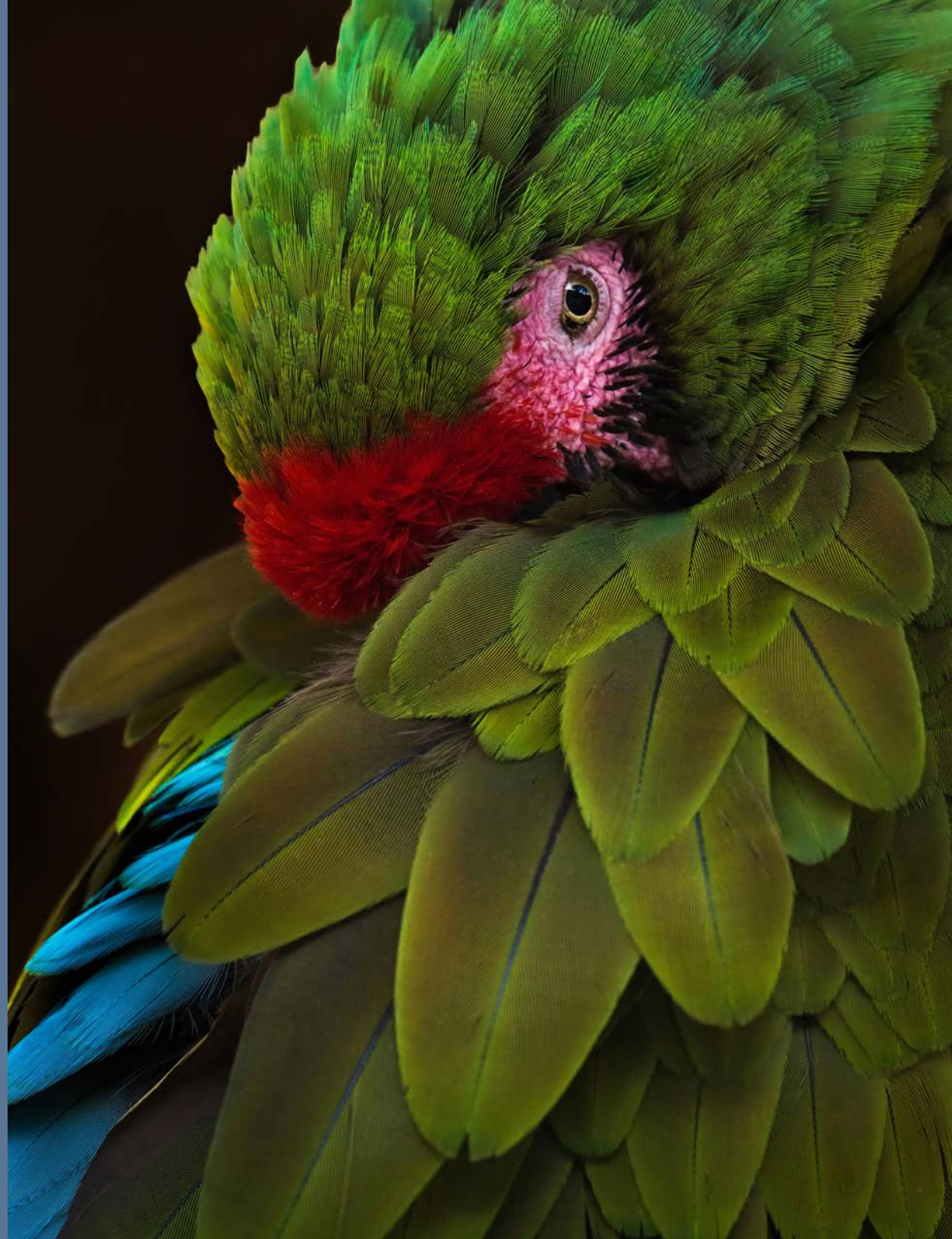
# The Beauty of Nature

It surrounds us, sustains us and breathes life into us: the natural world. In these pieces, American Society of Photographers artists interpret our world through photography. From the sumptuous colors of an tropical bird to the utter simplicity and velvety softness of a single bloom, these images bring the world around us into focus.

"Bashville"

Shawna Hinkel

Presentation dimensions:  
23.5W X 31.5H X 2D





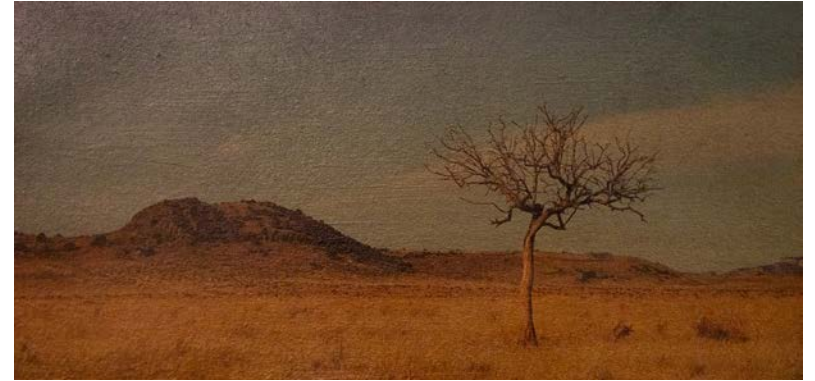
"Budding Romance"

Paul Biederman

Presentation dimensions:  
24W X 28H X 1.5D



"The Sentinel"  
Frances Alieen Harding  
Presentation dimensions:  
14W X 11H X 1D



"A Utah Treasure"  
Bruce Bonnett  
Presentation dimensions:  
36W X 20H X 1D



"Magic Lights"  
Prem Mukherjee  
Presentation dimensions:  
pending





"First Flight"

Paul Biederman

Presentation dimensions:

32W X 24H X 1.5D



"Bird Bath"

Paul Biederman

Presentation dimensions:

24W X 28H X 1.5D



"Daddy Long Legs"

Frances Aileen Harding

Presentation dimensions:

18.5W X 22.5H X 1D



"Organic Beauties"

Geogia Zumwalt

Presentation dimensions:  
pending

"Delicate Beauty"  
Karen Nakamura  
Presentation dimensions:  
pending



"Prairie Winds"

Vincent Vitale

Presentation dimensions:  
pending





"Moonlight Serenade" by Sara Goodnick, Presentation dimensions: 26 1/2W X 20 1/2H X .75D

"Song of the Sea"  
Jen Hargrove  
Presentation dimensions:  
34W X 14H X 1.3D



"Morning Sentinel"  
Vincent Vitale  
Presentation dimensions:  
pending



"After the Storm"  
Bruce Bonnett  
Presentation dimensions:  
36W X 11.5H X 1D









"Urban Mermaids"

Thom Rouse

Presentation dimensions:

22W X 33H X 1D

# Imagination and Technique

Sometimes the real world is not enough for these artists. Either in concept or in technique, these works display a mastery of technique and vision. From Thom Rouse's Urban Mermaids, who float in an undersea world of high rises and city streets to Gina Gardner's bouquet of melting flowers, these artists take you on a fantastical journey as they reshape the world through their art.





"Global Meltdown"  
Gina Gardner  
Presentation dimensions:  
30W X 25H X 1D



"Owl Meet You at Midnight"  
Marisa Balletti-Lavoie  
Presentation dimensions:  
pending

"Persephone"

Thom Rouse

Presentation dimensions:

20W X 30H X 1D



"Anony-Mouse"

Gina Gardner

Presentation dimensions:

pending



Hidden Treasure" Kimberly Smith Presentation dimensions: pending





"Love Birds" Kimberly Smith Presentation dimensions: pending

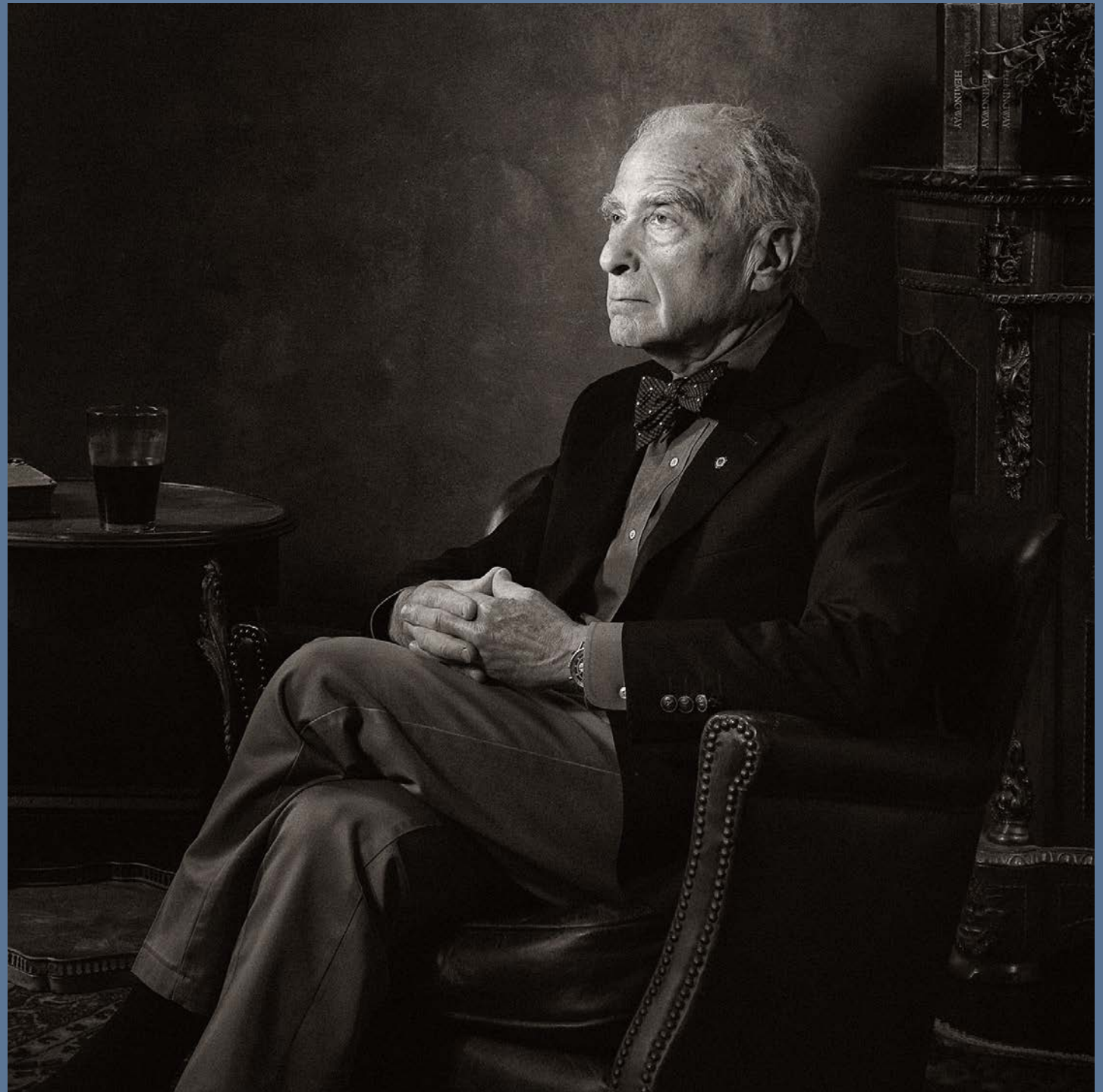
# In Their Own World

A photograph often offers the viewer a glimpse into a time and a world beyond their own experience. In this collection, American Society of Photographers artists create windows into the private spaces occupied by their subjects in deeply personal, evocative, and touching imagery.

"Lonesome"

Udi Edhi

Presentation dimensions:  
28W X 36H X 1.75D







"The Skeptic"

Danica Barreau

Presentation dimensions:

32W X 22H X 1.5D



"Texting and Driving"

Rob Behm

Presentation dimensions:

21.13W X 17.13H X 1.25D



"The Violinist"

Edda Taylor

Presentation dimensions:

pending

"The Painter"

Leslie Kitten

Presentation dimensions:  
pending



"The Curators"

Ed Pedi

Presentation dimensions:  
pending



"Shoosh, I'm Trying to Ignore You"

Jen Hargrove

Presentation dimensions:  
24.57W X 30.75H X 2.5D





"Daydreaming"

Danica Barreau

Presentation dimensions:

22W X 28H X 2.5D



"Lazy Days"

Jen Hargrove

Presentation dimensions:

28.75W X 32.75H X 2.5D

"Simply Sidney"  
Dawn Muncy  
Presentation dimensions:  
pending



"The Ranch Hand"  
Tony Corbell  
Presentation dimensions:  
pending

"Lost Chord"

Jill Bochicchio

Presentation dimensions:  
28W X 34H X 2D







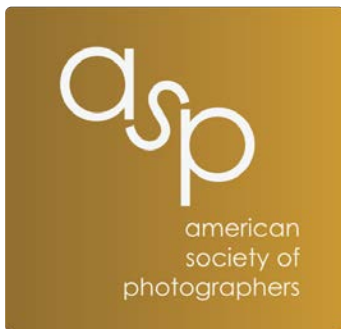
"The Watchman" by Aileen Harding from "The Maker's Muse" collection

# In Summary

In addition to their accomplishments within professional photography organizations, many of the artists whose works are displayed in these pages have exhibited work in museums and galleries throughout the country. All have been won international awards and are professionally degreed.

# Contact info

Museum Project Coordinator: Anne Looney: [annekelleystudio@gmail.com](mailto:annekelleystudio@gmail.com)  
or  
American Society of Photographers: [info@asofp.com](mailto:info@asofp.com)



© 2022 The American Society of Photographers